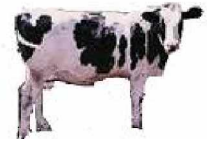




July 2010



Tend-R-Leen Tech Report

Dealing with the Heat

Livestock suffer when summer temperatures and humidity rise together. The combined effect of high temperature and humidity limits the animal's ability to get rid of excess body heat. Severe heat stress can lead to loss of performance and even death.

The ideal temperature range for cattle is between 25° and 65° F. Cattle experience heat stress when they lose the ability to dissipate sufficient heat to maintain thermal balance and body temperature rises. Heat stress in cattle begin at 75° F.

The Livestock Safety Index classifies weather conditions into alert, danger, and emergency situations for livestock. The following table shows minimum relative humidity levels for each index category at different temperatures.

Temp	Relative Humidity		
	ALERT	DANGER	EMERGENCY
80° F	55%	90%	
85° F	30%	60%	90%
90° F	15%	35%	65%
95° F		20%	45%
100° F		10%	30%

Source: Iowa Beef Center

Follow these steps to manage heat stress.

Cattle do not handle heat stress as well as humans. SO while we may be uncomfortable on those 90 degree days, your cattle may actually be suffering more severe symptoms. The key to minimizing heat stress is to try to prevent and lessen the effects of the heat by implementing a heat stress management plan.

1. Have ample water available. Make sure that your water supply can keep up with the demand of the number of animals in the lot.

Water requirements for feedlot cattle (Gallons/Day)

Animal Type	Weight (lbs)	Temperature	
		40°F	70°F
Growing Calves	400	4.0	5.8
	600	5.3	7.8
	800	6.3	9.2
Finishing Cattle	800	7.3	10.7
	1000	8.7	12.6

Source: Ohio State University Extension

2. Avoid handling cattle if possible. If you need to work with your steers, consider doing it before 10 am, before temps start to climb.
3. If steers are not on a self feeder, consider moving feeding time towards evening, 2 to 4 hours after peak temperatures.
4. Improve air flow in pens.
5. If cattle are in open lots, provide adequate shade for all animals.
6. Control biting flies.

Watch for signs of heat stress.

- ◆ Bunching in shade (if it's available)
- ◆ Slobbering
- ◆ High respiratory rates (panting)
- ◆ Open mouth breathing
- ◆ Lack of coordination
- ◆ Trembling

If your cattle are showing these signs of heat stress, you must take immediate action to alleviate the heat stress conditions. Move cattle to a shade where there is adequate ventilation. Offer a constant supply of fresh water. If possible, use sprinklers to help

cool cattle down. Also, if you must move cattle, do so gently and quietly to avoid stressing them more.

Make adjustments for handling feed during hot weather.

- ◆ During hot months, keep supply on hand for a maximum of one month.
- ◆ Store feed in bins when possible. Floor, wagon, and other methods will work, but due to the nature of pellet it can draw moisture which will cause breakdown.
- ◆ Handle feed through augers as little as possible.
- ◆ Put Tend-R-Leen pellet in mixer after corn and mix for as short as possible. (It doesn't take much to mix.)
- ◆ Don't store corn/pellet mix for more than one week if possible, especially during hot months.
- ◆ Watch corn to maintain a moisture level below 15% and keep corn temperature within 20% of outside temperature. Cold corn will sweat on hot days and moisture will go into the pellets.
- ◆ Clean feeders and keep them properly adjusted.
- ◆ Use good bin management by completely cleaning out the bin every couple of months.

July Beef Events

North Central Wisconsin Cattlemen's Association Come Celebrate at the Beef Roundup

Saturday, July 17, 2010, 10 am - 10 pm
Brecke Rodeo Arena, Hwy. 64, 5-1/2 miles west of
Medford
Free Admission to All Events

2010 MN State Cattlemen's Association Summer Beef Tour & Trade Show

July 12—13 2010, Morris, MN
The Board of Directors quarterly meeting will be held July 12, 2010 at the Pomme de Terre Golf Club in Morris, MN. The quarterly meeting will be followed by afternoon golfing and a steak dinner.
The Beef Tour and Trade Show will be July 13. The Tour will feature farm stops and attractions in Stevens County and surrounding areas including several cow/calf and feedlot operations, a dairy with a methane digester, a kidney bean processing plant, and a manufacturing facility. Breakfast, lunch, and steak supper is included with paid registration to the Summer Beef Tour and Trade Show.

For more information and to register:
www.mnsca.org

Cattle Industry Summer Conference

Denver, CO, July 28-Aug. 1, 2010
For more information:
303-694-0305 or www.beefusa.org.

Stop by and visit us at Farm Tech Days!

Located at the Roger and Bev Peterson Farm (River Falls)

July 20 - 22

Booth #514-515

July Tend-R-Leen Promotion

Promotion Period: July 1—July 30, 2010

When you purchase 1900 lbs. of qualifying Tend-R-Leen products,
you will receive

100 lbs. of the same product FREE!



Qualifying product codes:

536, 529, 1375, 375, 532

Both bulk and bag product qualify.

